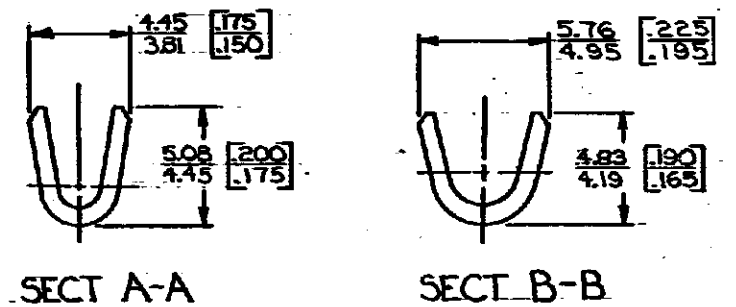
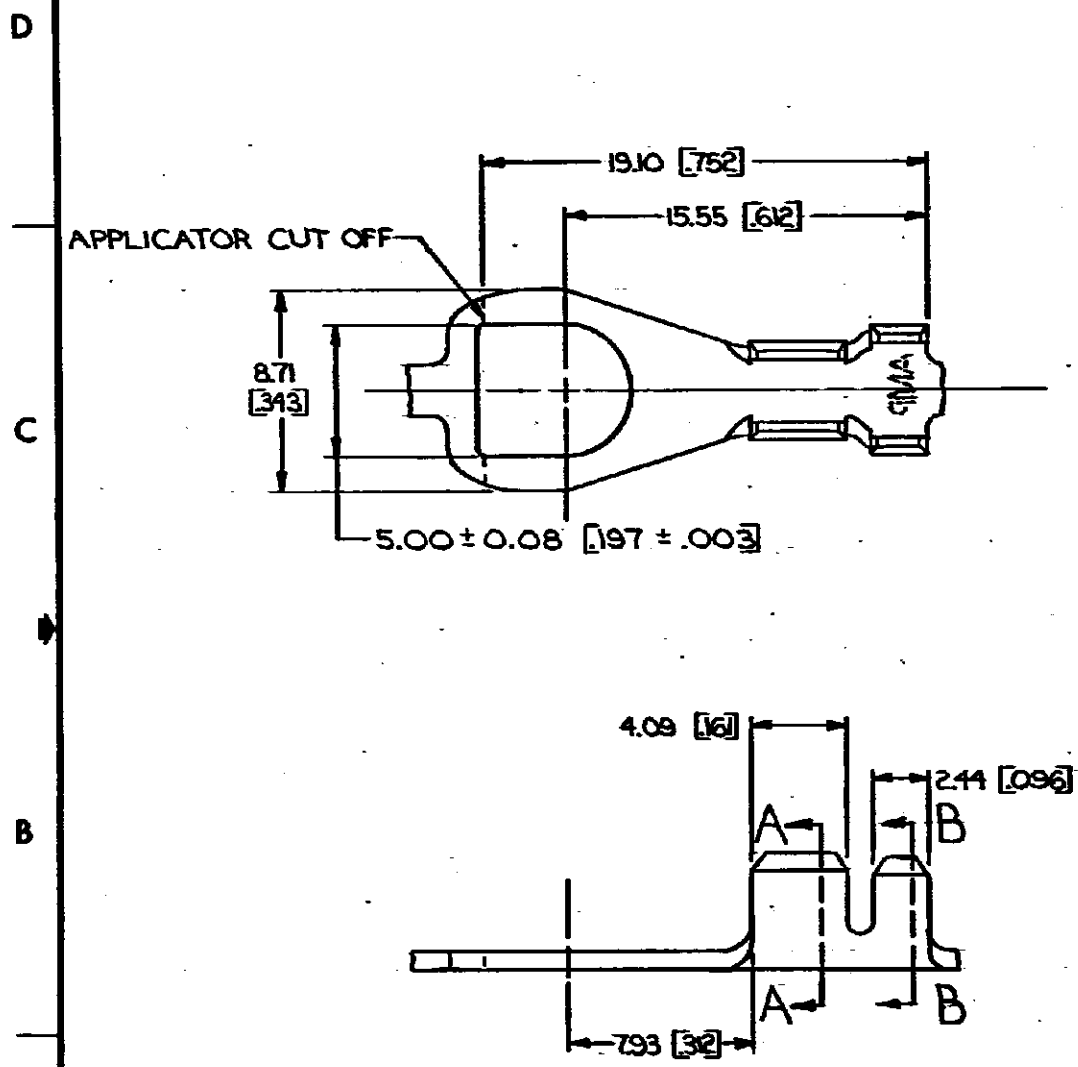


DRAWING MADE IN THIRD ANGLE PROJECTION

© COPYRIGHT 1964 BY AMP INCORPORATED, HARRISBURG, PA.
 ALL INTERNATIONAL RIGHTS RESERVED. AMP INCORPORATED PRODUCTS
 COVERED BY U. S. AND FOREIGN PATENTS AND/OR PATENTS PENDING.

1 LOC AF DIST 50

REVISIONS					
P	ZONE	LTR	DESCRIPTION	DATE	APPROVED
		D	REDRAWN & REVISED A-3943	4/2/78	
		E	REVISED AF0230	8/2/88	JR/ 67
		F	OBSOLETE -1 AF 1556	6/3/86	JR/64
		G	REV PER AF5641A	11/1/88	DKS/1076



—	0.8-2.0 mm ²	2.54-3.56	PRE-NICKEL	0.79 [03]	STEEL	40808-1
#10	[18-14]	[100-.140]	TIN	0.76 [030]	BRASS	40808
STUD SIZE	WIRE RANGE	INSULATION RANGE	FINISH	MATERIAL		PART NO

1. CONTINUOUS STRIP ON REELS.
 2. DIMENSIONS IN BRACKETS ARE IN INCHES.

METRIC

UNLESS OTHERWISE SPECIFIED DIMENSIONS ARE IN MILLIMETERS. TOLERANCES ON: DECIMALS ± 0.03 [015] ANGLES ± 1°		CONTRACT NO	AMP INCORPORATED Harrisburg, Pa.	
MATERIAL	SEE TABLE	DR <i>L. Magano</i> 4/20/78	NAME SPADE	
FINISH	SEE TABLE	CHK <i>G. Yetter</i> 7/20/78	SIZE B	CODE IDENT NO 00779
		APP <i>R. P. Frantz</i> 8-10-78	DRAWING NO 40808	SHEET
		APP <i>G. Z. Zuber</i> 8-10-78	SCALE	
		DSGN APPD		
		OTHER APPD		